

Golden Door Charter School

3044 Kennedy Blvd., Jersey City, NJ



Project Summary

- Golden Door CS established in 1998
- 502 students
- Previous Location: 180 9th Street, Jersey City Redevelopment Authority (JCRA) property; \$950,000/yr

\$4,000,000 construction costs

\$1,600,000 soft costs

\$5,600,000 new markets tax credits

40 year lease with Newark Archdiocese

\$375,000 rent

\$460,000 mortgage payment

\$835,000/ yr

Timeline

Design: Mar. 2010- Sept. 2010

Bid 1: Oct. 2010

Bid 2: Nov. 2010

Mobilization: Dec. 2010

Construct. Start: Jan. 2011

TCO: Sept. 2011



St Pauls Ave / John F Kennedy Blvd, Jersey City, NJ, United States
Address is approximate



SPEED LIMIT
25



NO TURN ON RED
SEE SIGN AHEAD

St Pauls Ave

John F Kennedy Blvd

John F Kennedy Blvd

St Pauls Ave

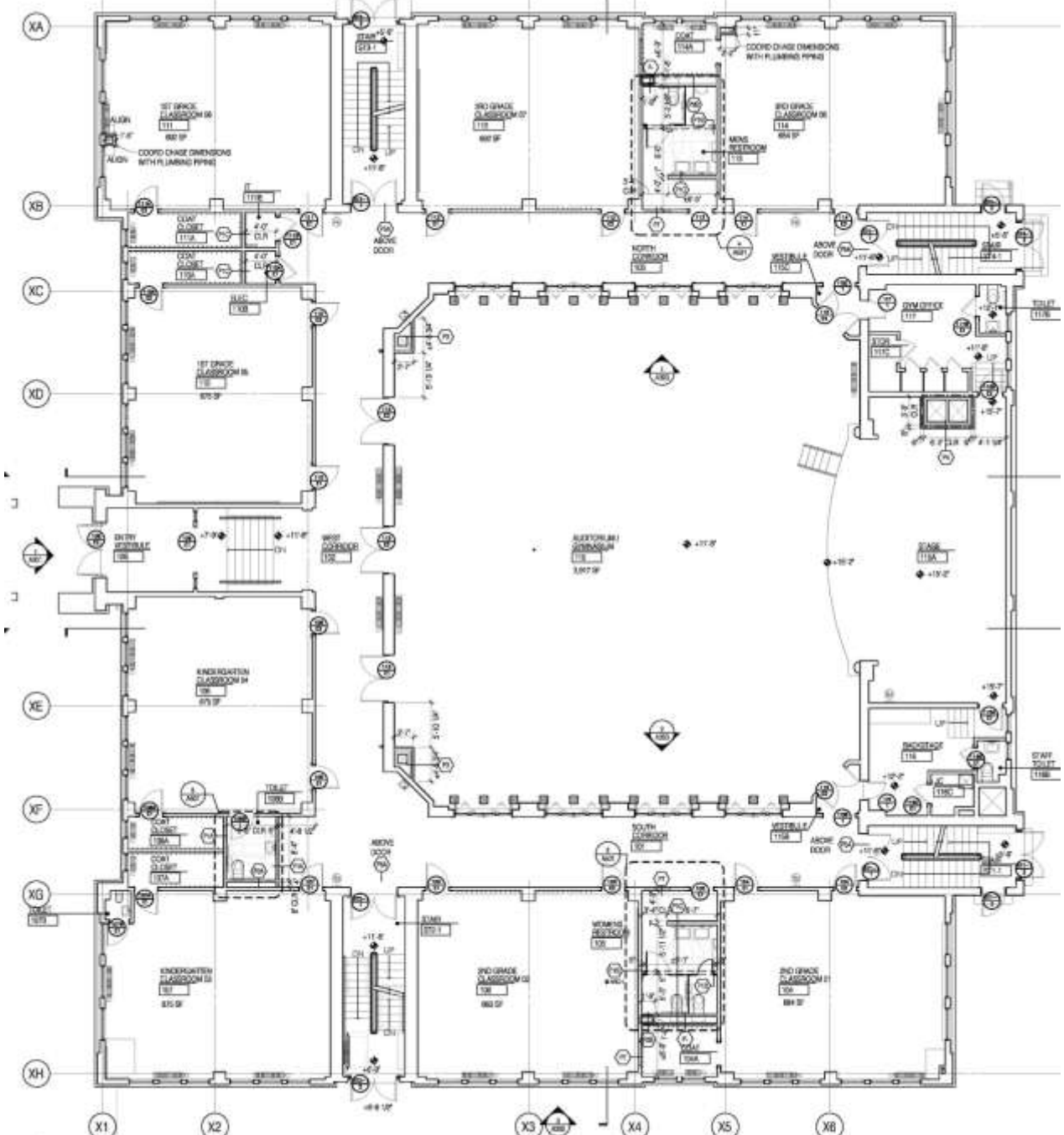
3036 John F Kennedy Blvd, Jersey City, NJ, United States
Address is approximate











2
A101

First Floor Plan - School

SCALE: 1/8"=1'-0"

LEGEND
 - - - - - 1-HR FIRE SEPARATION







Before



After





Before



After



